

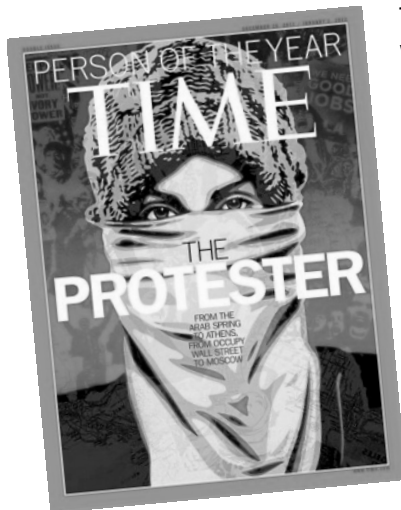
Psalm 2 - Immediate and Unconditional Surrender

Small Group Work Sheet
December 18, 2011

Part 1 - Ice Breaker

- Will you attend Christmas Eve at the SAMI Center? It is December 24th at 5:30 in the evening. Who am I inviting?

Part 2 - Sermon Review



1.If you are a father, what are your plans to lead the family in worship of Christ this Christmas season?

2.What is wrong with *inviting Christ into my heart*?

3.*Time Magazine* named the person of the year, "The Protester." Why do we rebel against authority?

4.In what ways do I rebel against ultimate authority? Where is true freedom found?

5.According to Acts 4:25-28 Why should we expect opposition any time we preach Christ?

6.EXTRA CREDIT: What is concurrence? Provide biblical examples. Why is understanding concurrence important to understanding God?

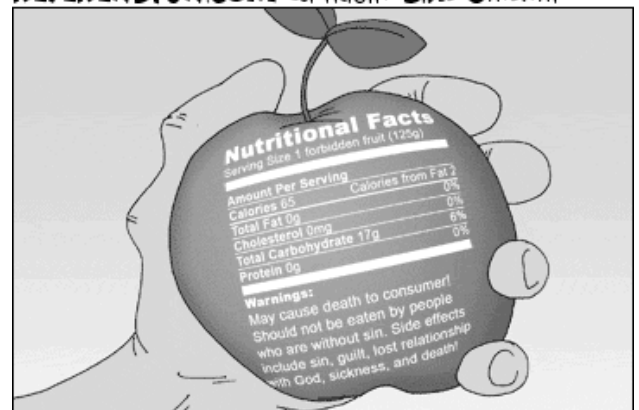
7.In Psalm 2, why does the Lord laugh?

8. Why is rebellion so futile?

9. What will Christ's second coming be like?

10.This Psalm is a divine warning label for the consequences of rejecting Jesus. How does this change the way I talk about Jesus with others?

REVERENDFUN.COM COPYRIGHT BIBLE GATEWAY



Thanks to Mikel Rice (See Genesis 3)

03-19-2007